

Earth Observation and Disaster Management Research

Dr Allison Rifai

Executive Manager, Research and Communications

Office of the Inspector-General of Emergency Management

Inspector-General of
Emergency Management



Queensland
Government

An aerial photograph of a dry, gnarled tree with many thin, light-colored branches reaching out against a deep blue sky. The tree's structure is complex and fractal-like, filling the frame. The text is overlaid on a semi-transparent dark blue rectangular area in the center of the image.

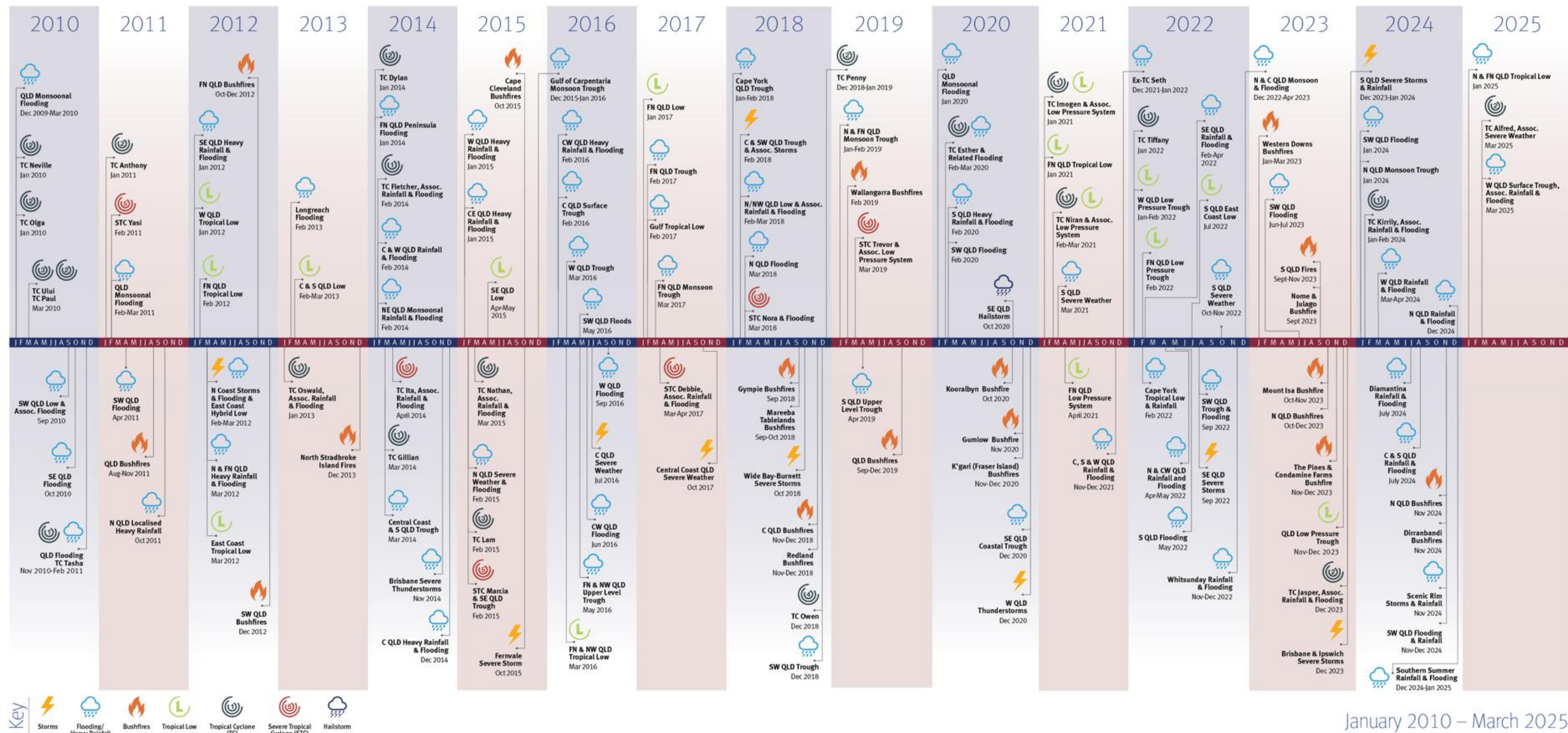
Acknowledgement of Country

We acknowledge the Australian Aboriginal peoples and Torres Strait Islander peoples as the Traditional Owners and Custodians of Country.

We recognise and honour their ancient cultures, and their connection to land, sea and community.

We pay our respect to them, their cultures, and to their Elders past and present.

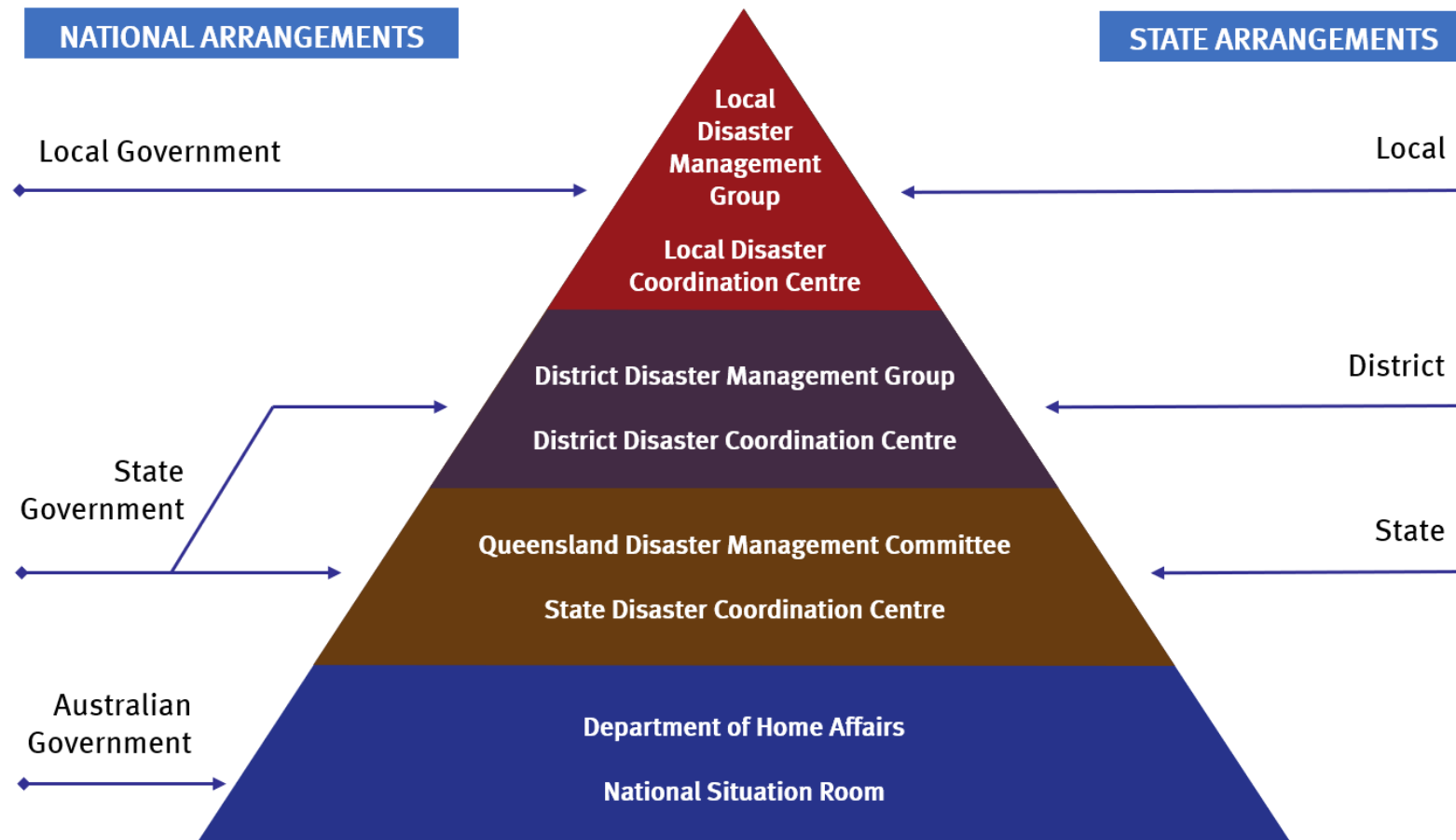
Natural disaster events in Queensland



January 2010 – March 2025

Image: Disaster events in Queensland
Source: Queensland Reconstruction Authority

Queensland's disaster management arrangements are strong



Office of the IGEM

Provides Queensland Government and the community with assurance in our disaster management arrangements by:

Implementing the
*Standard for Disaster
Management in
Queensland.*

Reviewing and assessing
the effectiveness of
disaster management.

Bringing together the
disaster management
sector to focus collective
efforts on enhancing
capability.

Office functions are prescribed in the *Disaster Management Act 2003*.

Standard for Disaster Management in Queensland

Office of the **Inspector-General of Emergency Management**

What the Standard does

- ✓ Promote a shared approach to disaster management
- ✓ Ensure accountability
- ✓ Drive continuous improvement
- ✓ Guide collaboration across entities
- ✓ Measure performance

Scan here to read
the Standard



Outcomes by shared responsibility

Managing Risk

- **Outcome 1:**
Shared understanding of risks
- **Outcome 2:**
Risk is managed to reduce impact

Planning & Plans

- **Outcome 3:**
Shared understanding of coordination
- **Outcome 4:**
Plans show how impacts will be reduced

Community Engagement

- **Outcome 5:**
Entities engage with communities
- **Outcome 6:**
Communities make informed decisions

Capability Integration

- **Outcome 7:**
Resources shared when and where needed
- **Outcome 8:**
Capabilities integrated to reduce impact

Operations

- **Outcome 9:**
Response reduces impacts
- **Outcome 10:**
Relief supports recovery
- **Outcome 11:**
Recovery minimises long-term impacts

Collab. & Coordination

- **Outcome 12:**
Entities collaborate effectively
- **Outcome 13:**
Collaborative culture is embedded

Common Language

- **Outcome 14:**
Shared language used across entities

Our role in research



Our role in research

- Research Connect webpages
 - Research Connect newsletters
 - 2025 Disaster Management Research Forum
- [Research Connect | IGEM](#)



The screenshot shows the top section of the Queensland Government website. The header includes the Queensland Government logo, the text 'Office of the Inspector-General of Emergency Management', and navigation links for 'Help', 'Contact Us', 'Search', and 'English'. Below the header is a horizontal menu with links: 'Home', 'About us', 'Reviews & reports', 'Standard for Disaster Management', 'Research', 'Assurance activities', and 'Lessons'. The main content area is titled 'Research Connect' and features six dark blue rectangular buttons arranged in a 2x3 grid. The buttons are labeled: 'Research into practice', 'Events calendar', 'Latest articles & newsletters', 'Guide to Research', 'Research Forum', and 'Research hub: connect to researchers'.

Queensland Government

Office of the
Inspector-General of
Emergency Management

Help
Contact Us

Search

English

Home About us Reviews & reports Standard for Disaster Management Research Assurance activities Lessons

Home > Research Connect

Research Connect

- Research into practice
- Events calendar
- Latest articles & newsletters
- Guide to Research
- Research Forum
- Research hub: connect to researchers

Themes from reviews – opportunities for earth observation data?



An aerial photograph of a river winding through a landscape. The river is a deep blue color, and the surrounding land is covered with numerous dead, white, skeletal trees and branches. A semi-transparent dark blue rectangle is centered over the image, containing white text.

Thank you

www.igem.qld.gov.au

Research@igem.qld.gov.au