



# Healthy Land & Water

## Leveraging Earth Observation Data for Natural Resource Management Projects

Michael Castiglione  
Melissa Walker  
Healthy Land & Water

Delivering an **environment** for **future generations** to thrive





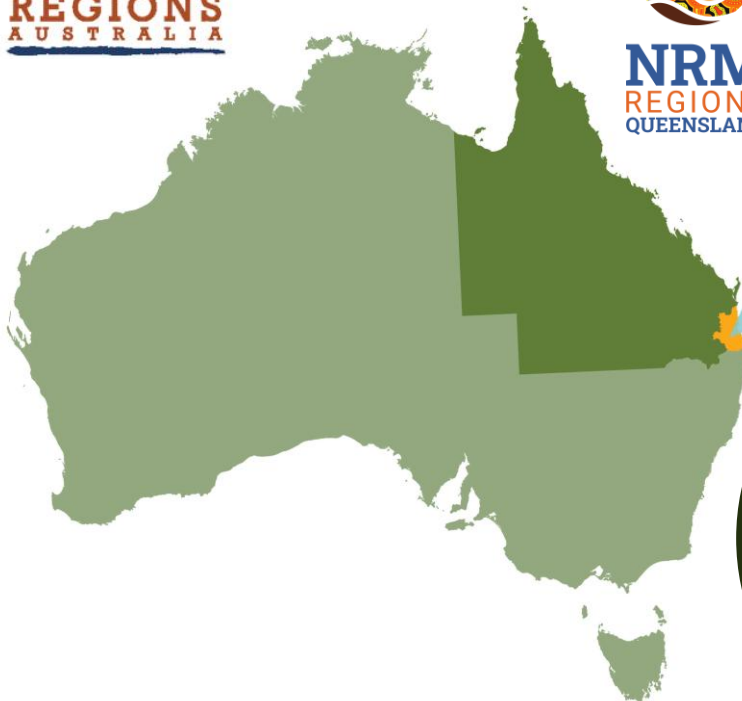
## Acknowledgement of **Country**

In the spirit of reconciliation,  
we acknowledge the  
**Traditional Custodians** of  
country throughout Australia  
and their **connections to  
land, sea and community**.  
We pay our respect to their  
elders past and present and  
extend that respect to all  
Aboriginal and Torres Strait  
Islander peoples today.



*Artwork by Daniel Evans,  
Walkabout Warriors Art*

Delivering an **environment** for **future generations to thrive**



Our region  
is known  
for being:

- Beautiful.
- Biodiverse.
- Populated.
- Climate change exposed.



**67,000**  
average annual  
population growth  
(last 10 years)



**\$14B**  
tourism industry  
in SEQ per annum



**1.65M**  
number of jobs



**~2400**  
native fauna species



home to around 40% of Queensland's  
Aboriginal and Torres Strait  
Islander population



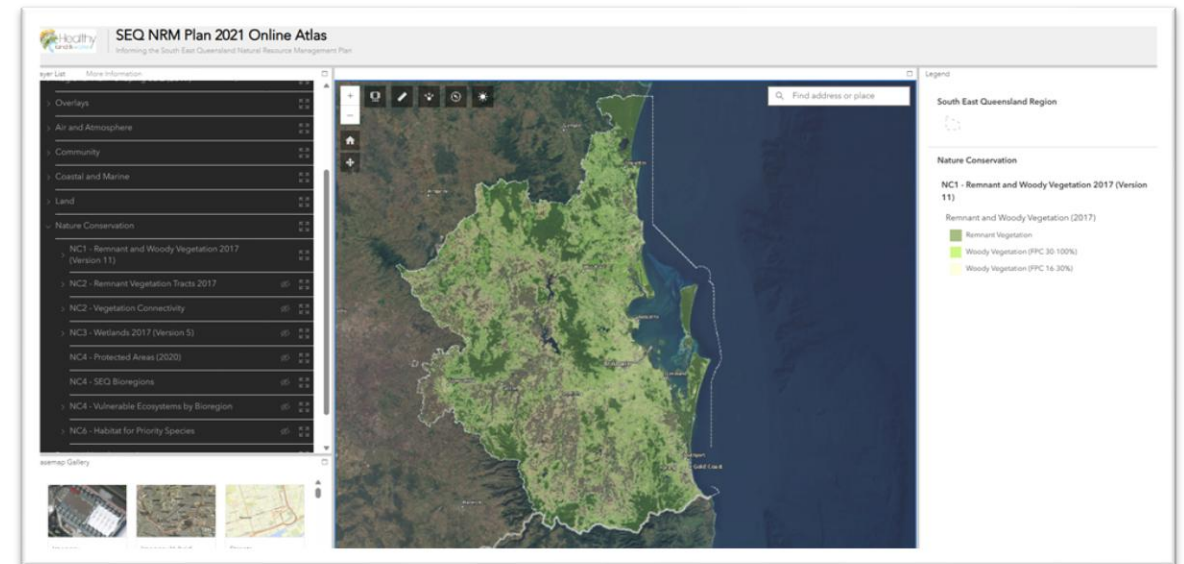
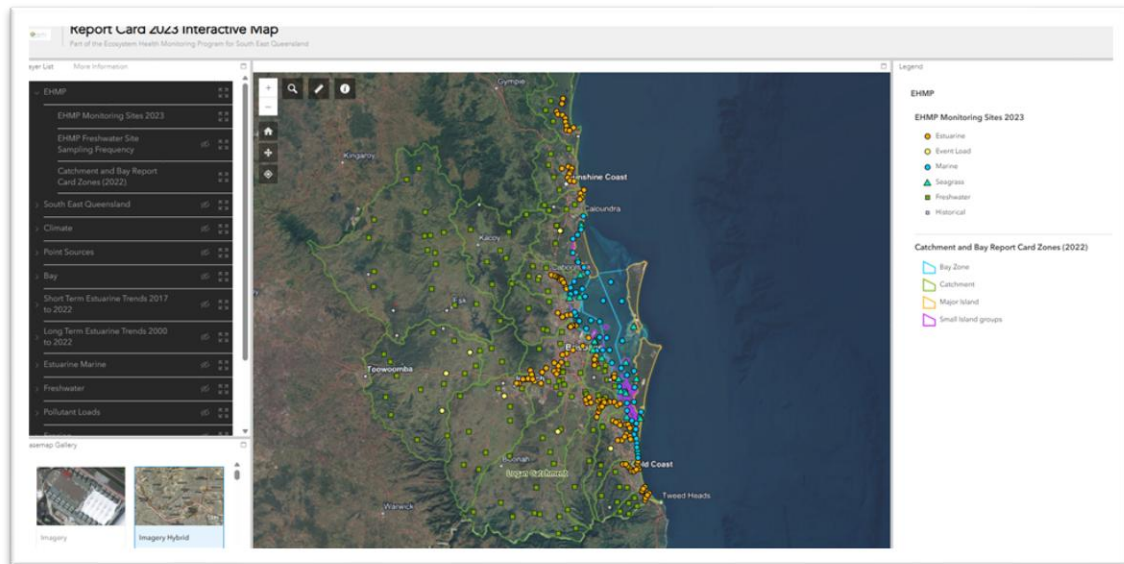
**1 IN 7**  
Australians living in SEQ



**~6000**  
flora species

# Where does GIS fit in NRM's

- It underpins much of our work
- Utilise region wide data to do landscape assessments
- Open-source, large scale data



# Challenges to implementation and utilisation

- **Training for HLW staff**
  - Better utilise ESRI tools to analyse satellite data
  - To use ENVI and understand the practical benefits
  - Any others that are fit for purpose
- **Data privacy standards**
  - Stakeholder data (landholders, general public ect)
  - Navigating indigenous resources

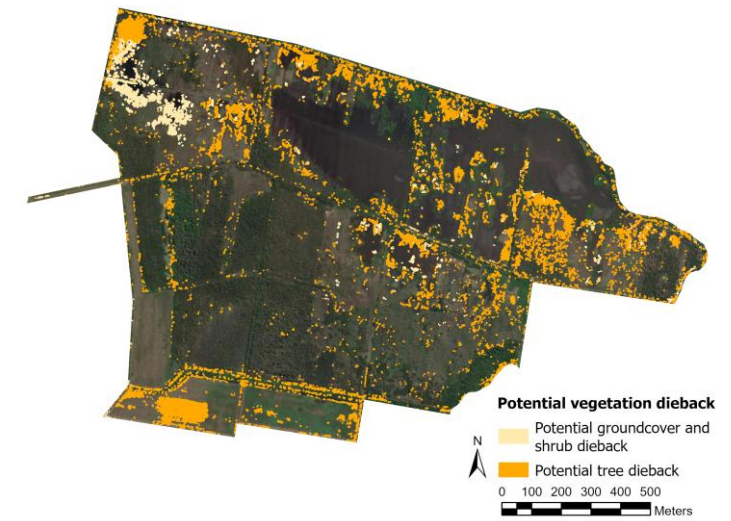


**Current software  
vs  
No access**



# Where can EO data fit?

- Planning projects
- Support on-ground monitoring (tree establishment, restoration works)
- Better spatial and temporal information



# Opportunities

- **Less reliance on open-source data**
- **High quality region scale data**
- **Landscape scale assessment skill development**
  - Landcover change assessments
  - Update NRM plan
  - Prioritisation works
  - Integrated sediment assessment



Thankyou!

